



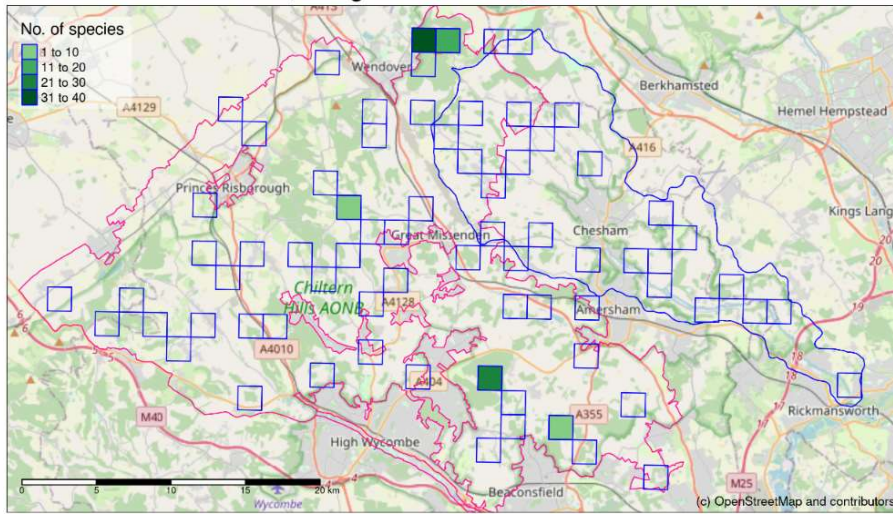
## Tracking the Impact Species Assemblage maps

Including data for 2021, 2022 and 2023 survey seasons

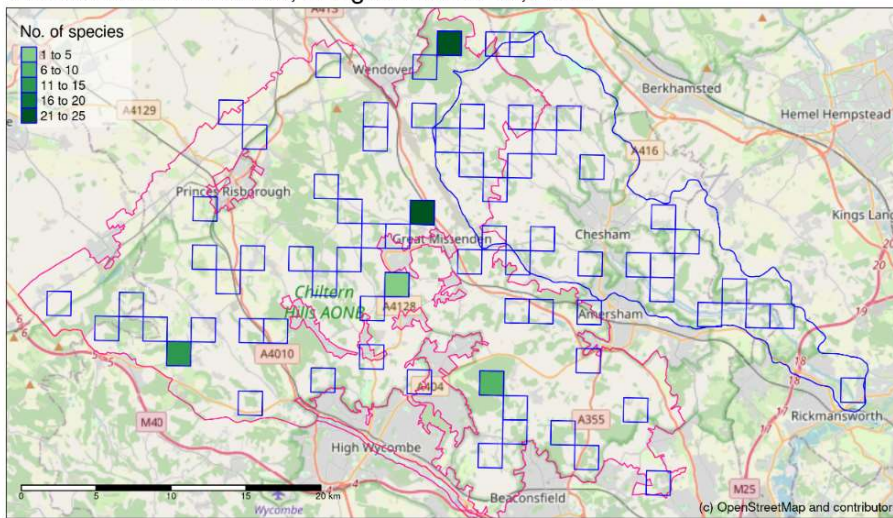
### Plants

Species	Survey Year	No. squares recorded	No. species recorded
Broadleaved woodland, hedges and scrub	2021	5	61
Broadleaved woodland, hedges and scrub	2022	6	53
Broadleaved woodland, hedges and scrub	2023	3	35
Dry calcareous grassland	2021	5	62
Dry calcareous grassland	2022	5	91
Dry calcareous grassland	2023	7	35
Neutral pastures & meadows	2021	5	63
Neutral pastures & meadows	2022	6	53
Neutral pastures & meadows	2023	11	30
Rivers and streams	2021	3	15
Rivers and streams	2022	1	4
Rivers and streams	2023	3	10

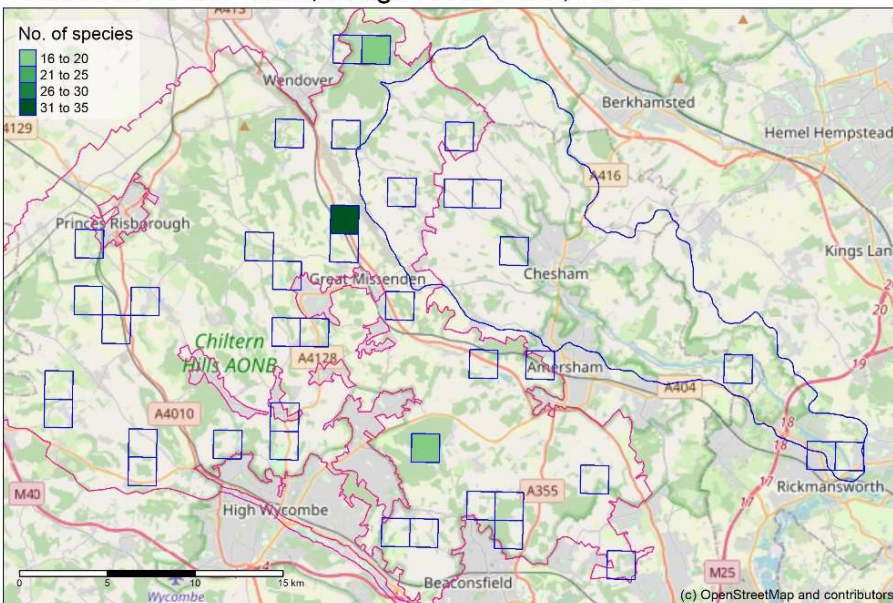
### Broadleaved woodland, hedges and scrub, 2021



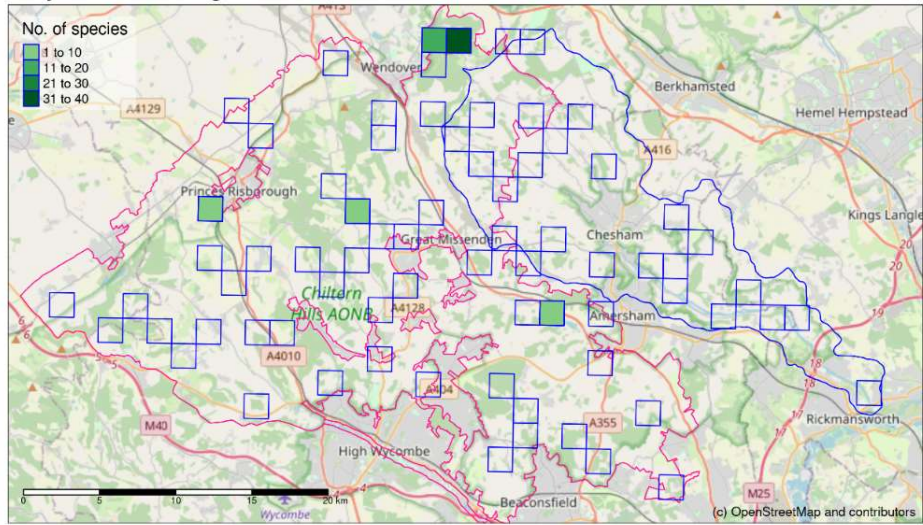
### Broadleaved woodland, hedges and scrub, 2022



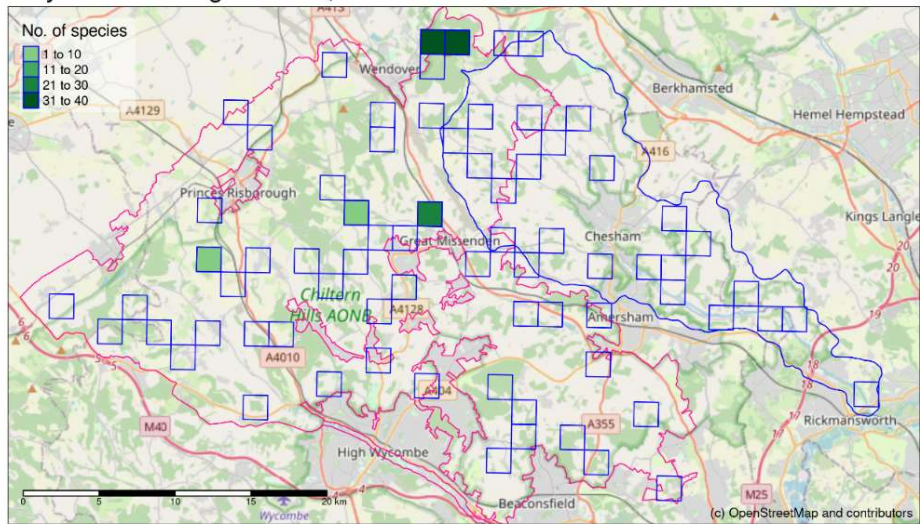
### Broadleaved woodland, hedges and scrub, 2023



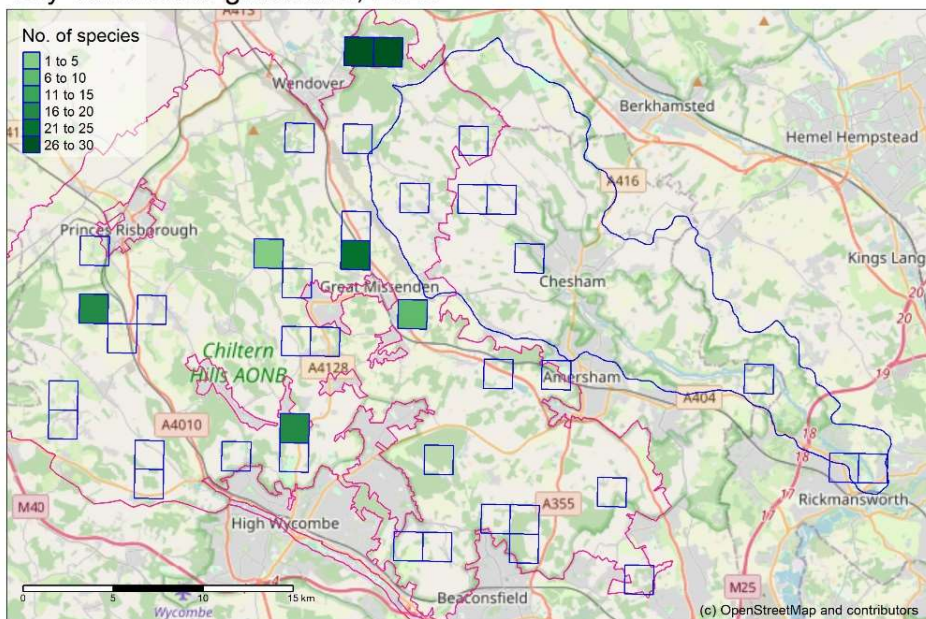
### Dry calcareous grassland, 2021



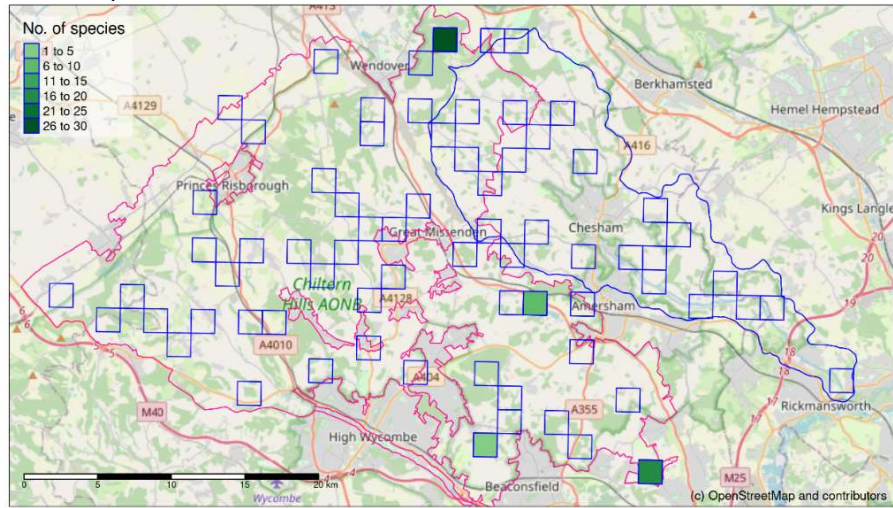
### Dry calcareous grassland, 2022



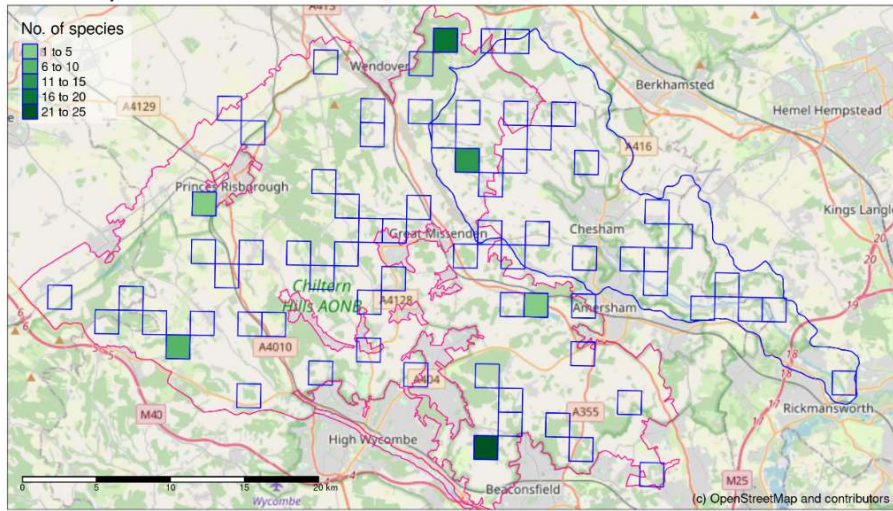
### Dry calcareous grassland, 2023



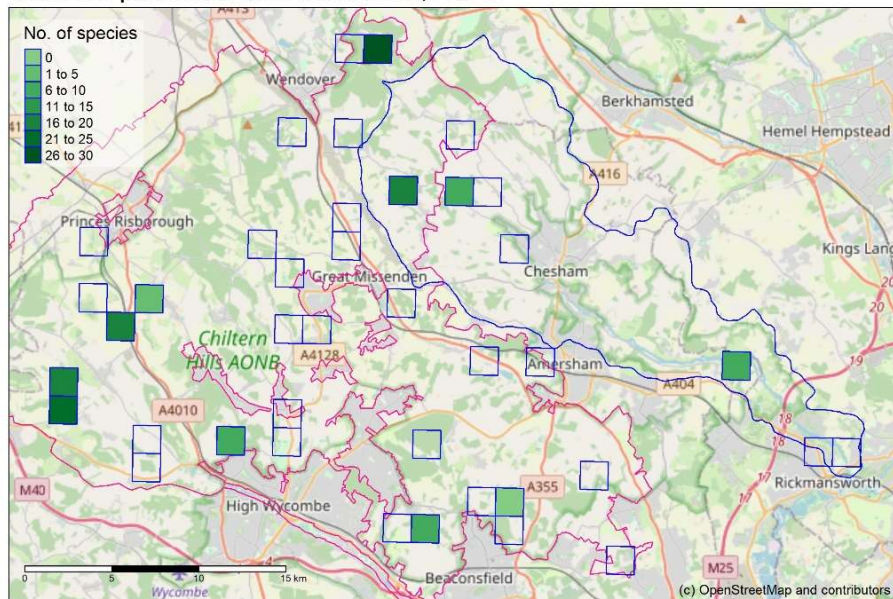
### Neutral pastures and meadows, 2021



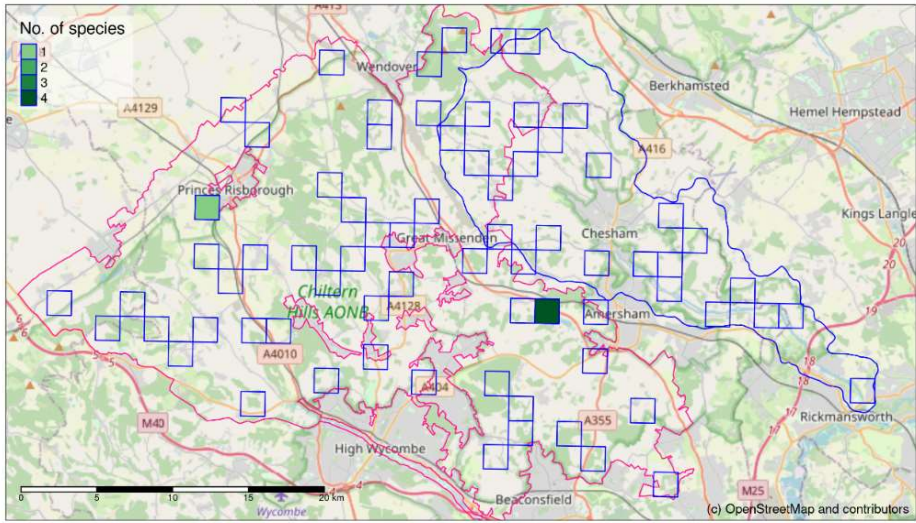
### Neutral pastures and meadows, 2022



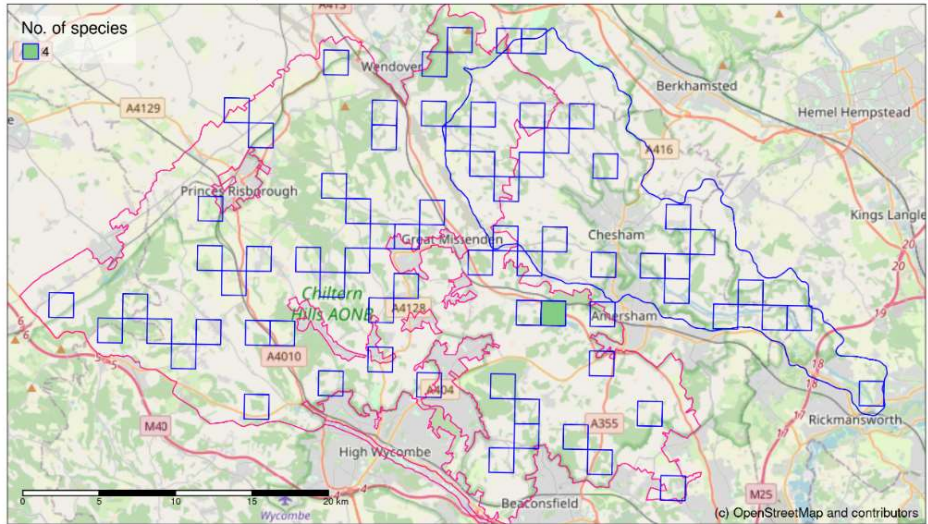
### Neutral pastures and meadows, 2023



### Rivers and streams, 2021



### Rivers and streams, 2022



### Rivers and streams, 2023

