

CHALK, CHERRIES AND CHAIRS

LANDSCAPE PARTNERSHIP SCHEME

Leaving a lasting legacy for the
wildlife, heritage and people of the
Central Chilterns



CHILTERN
LANDSCAPE PARTNERSHIP



Thanks to
National Lottery players

End of Scheme Report 2024

Impact that lasts a lifetime

The wildlife, heritage and people of the Chilterns are richer for the successes of Chalk, Cherries and Chairs



Foreword *a word from our Chairs*



Eliza Alqassar, Steering Group Chair, 2022-24

When we started the Chalk, Cherries and Chairs Landscape Partnership, our vision was to bring together a range of expert organisations, with the common goals of protecting and restoring the landscape of the Central Chilterns, and improving people’s understanding of how they are connected to it.

The word ‘landscape’ is both evocative and all-encompassing. It has different meanings for different people – whether the panoramic views of the rolling chalk hills or the cottage industries of bygone times, the wildlife and birds in the fields or the bustling opportunities of the towns, it is a word that captures a rich patchwork of culture and wildlife inextricably knitted together. Our three overarching themes of wildlife, heritage and people embraced ‘landscape’ in all its meanings, providing umbrellas for the varied projects that operated beneath them.



Nicola Thomas, Steering Group Chair, 2019-22

Being part of the Chalk, Cherries and Chairs Landscape Partnership Scheme from the very beginning has been a privilege. This massively ambitious, multi-million-pound Scheme was a vision realised by a knowledgeable, dedicated and diverse set of individuals and organisations. The Scheme has grown and developed, sometimes undulating like the landscape it sought to enhance as it traversed a range of challenges, yet ultimately delivering. This report gives just a snapshot of its impact – its projects have led to improved conservation and land management, more engaged communities aware of their connections with the landscape, more people volunteering, and new partnerships formed. All of these achievements are a testament to the hard work and commitment of the people involved, and there is no doubt that the wildlife, heritage and people of the Chilterns are richer for its successes.

As the Scheme itself comes to a close, we look forward to seeing what the future holds for the Partnership and the Chilterns landscape as a whole, knowing that what we do will build on the solid and lasting legacy of Chalk, Cherries and Chairs.



*Stuart McLeod,
Director of England
– London & South,
The National
Lottery Heritage
Fund*

The Chalk, Cherries and Chairs Landscape Partnership Scheme is an excellent example of how partnerships of like-minded organisations and stakeholders can come together to achieve change on a landscape-scale. This ambitious project has proved successful in its delivery for wildlife, heritage and local people.

The National Lottery Heritage Fund is one of the UK’s largest investors in landscapes and natural heritage and we strongly believe in ensuring they are safeguarded for generations to come. Thanks to National Lottery players, the Chilterns landscape has been enhanced, connections have been made, and legacies have been left. We are very proud to have supported this project and look forward to seeing how the Partnership continues to reinvigorate and protect the important natural and cultural heritage of the Chilterns.

About the Partnership and the Scheme

The Chalk, Cherries and Chairs Landscape Partnership Scheme ran from 2019-2024. It aimed to address urgent challenges facing the Central Chilterns, such as habitat loss, development, and an increasing disconnect between people and their local landscape.

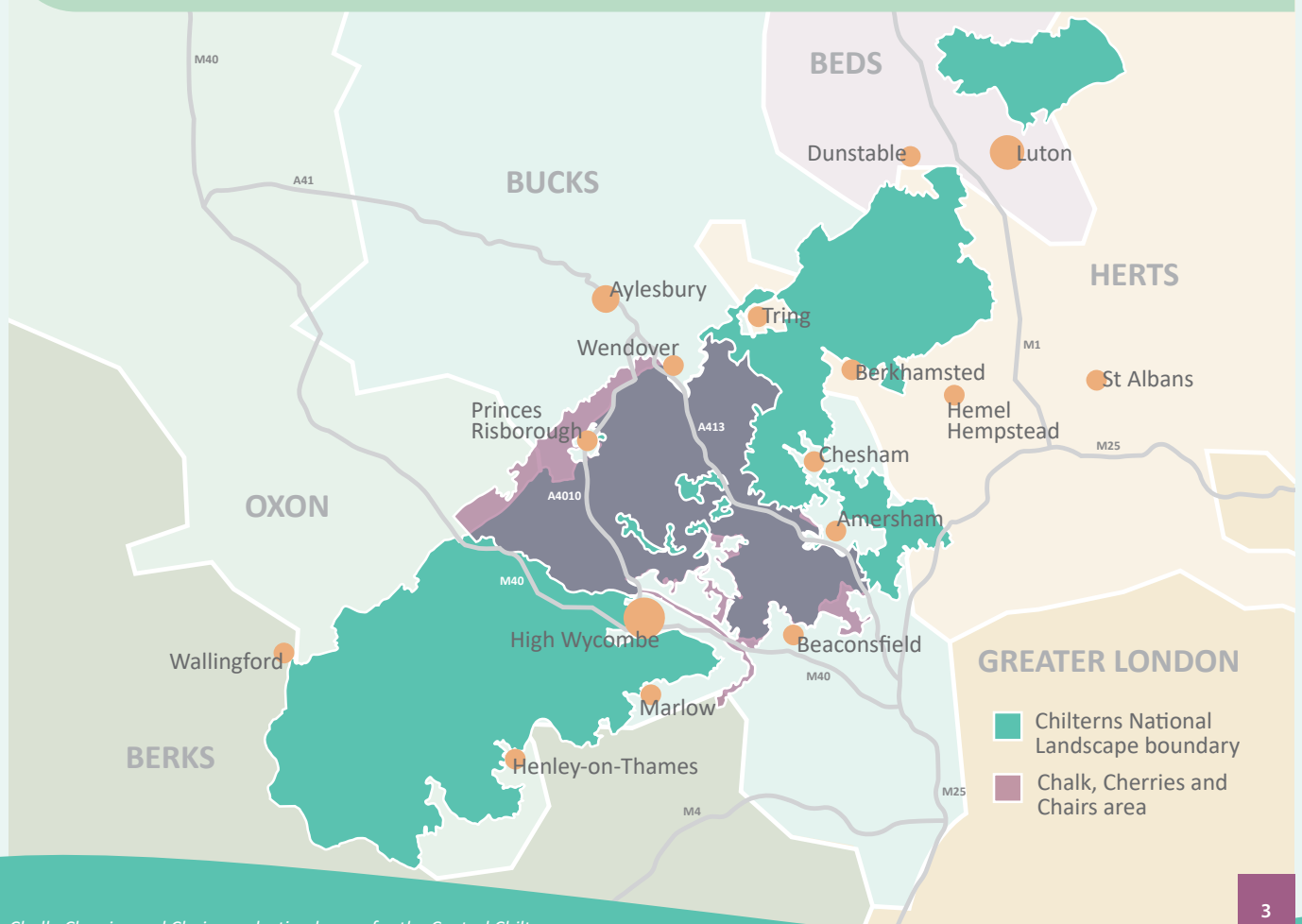
The Chilterns National Landscape was designated as an Area of Outstanding Natural Beauty (AONB) to protect its special qualities, including its biodiversity, culture, tranquillity and landscape features. These qualities are especially apparent in the central area of the Chilterns, where the geology, soils and climate, along with generations of human influence, have given rise to a rich and varied landscape. Here, the iconic chalk escarpment is peppered with flower-rich downland, ancient woodlands and commons abound, and tranquil valleys and routeways lead to picturesque villages and historic monuments.

Chalk, Cherries and Chairs focused on three themes – wildlife, heritage and people – to help find solutions to the challenges the area faced. A host of interweaving projects fell under these themes, designed with the landscape in mind and sharing common threads, such as engagement, research and restoration, in order to deliver tangible benefits and a lasting legacy.

The Scheme was funded primarily by The National Lottery Heritage Fund and the HS2 Community & Environment Fund, alongside a range of match funders, and hosted by the Chilterns National Landscape. Among other things, it fostered partnership working, expanded wildlife monitoring, and helped people to take action for wildlife and heritage through volunteering, planning, research, or simply enjoying local events. The Scheme increased understanding of the natural and social history of the region, such as the links between woodlands and chair-making, and the underlying chalk geology and wildlife today.



The Central Chilterns *our area in context*



Sharing our successes

Here's some ways in which we have protected and enhanced the wildlife, heritage and culture of the Central Chilterns over the last five years



164
FARMERS AND
LANDOWNERS
ENGAGED

18
farms in our
Farmer Cluster

**2 trainees
graduated**

and starting their careers in conservation

45 young people took part in
30 sessions of our nature programme,

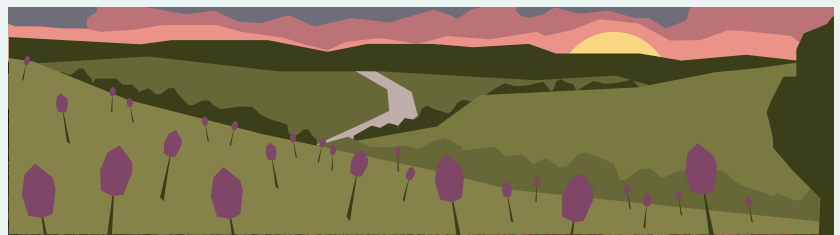
New Shoots

3 AWARDS:

- BTO 'MARSH AWARD' FOR TRACKING THE IMPACT
- PROUD OF BUCKS AWARD FOR NEW SHOOTS
- YOUNG VOLUNTEER OF THE YEAR - NEW SHOOTS PARTICIPANT



255
COMMUNITY
GROUPS AND
SCHOOLS ENGAGED



3,130 ha or 31 km²

Our total landscape improvement – that's an area roughly equivalent to 4,384 football pitches!

- ➔ **451 ha** habitat created or restored by capital works
- ➔ **1489 ha** habitat improved and better managed
- ➔ **112** different sites improved or enhanced



VOLUNTEERING EFFORT
WORTH OVER
£600,000

How we have shaped the landscape

Chalk, Cherries and Chairs was so-named for the characteristic natural and historical features of the Central Chilterns: the chalk scarp and valleys with their mosaic of woodland, grassland, farmland and wetland habitats; the 18th-century, fruit-growing industries that included cultivated cherries; and the 19th-century woodland industries, with 'bodgers' – the men who turned wood to make chair parts – supplying the furniture factories of Wycombe.

The Scheme has achieved so much in its five years. Its strong partnership has delivered projects combining wildlife and heritage in a way not seen before in the area. We have worked with new audiences and volunteers, delivered landowner support leading to landscape-scale conservation, and established baseline wildlife monitoring – all foundations for long-term change.

A particular success of Chalk, Cherries and Chairs has been the partnership between heritage and nature organisations, which has led to newly formed and strong relationships. Organisations have learnt from each other and gained an understanding of each other's expertise and experience. More than that, lasting friendships have been forged.

MORE THAN **20,000**
RECORDS OF BIRDS, BUTTERFLIES AND
PLANTS COLLECTED ACROSS **75** SURVEY
SITES OVER **3** YEARS – AND MORE TO COME ...

9 FESTIVALS

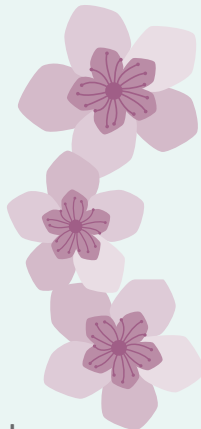
- 2020 – Autumn Chilterns Celebration
- 2021 – Summer Chilterns Celebration
- 2022 – Chilterns Landscapes
 - Chilterns Wildlife
 - Chilterns Stories
- 2023 – Chilterns Women
 - Chilterns Theatre
- 2024 – Chilterns Chalk
 - Chilterns Chairs



4199
DIGITAL
FOLLOWERS

140 pieces of physical
and digital interpretation
and information including ...

- oral histories
- interpretation panels and signage
- videos
- original books
- an inclusive virtual tour of part of Grim's Ditch
- an online Chilterns Neighbourhood Planning Toolkit
- an original play – Sour Cherry Soup
- census records for 18 villages sent to Bucks Archives



16,537
people engaged:

- ➔ **316** different activities put on such as walks, talks & events
- ➔ **2,616** children and young people engaged in activities



10 NEW HERITAGE
TRAILS ESTABLISHED

20

creative people supported
through artistic commissions



Exemplars of a landscape scheme

Within the Scheme, a whole host of interesting projects took place – here are just a few examples to showcase the breadth of work undertaken



Working in partnership *uncovering the mysteries of Grim's Ditch*



Grim's Ditch is a series of linear earthworks that stretch through the Chilterns and beyond. The exact date and purpose of the Ditch is still unknown, but it is commonly believed to have been a prehistoric land boundary. As part of our *Mysteries of Grim's Ditch* project, we collaborated with Buckinghamshire Council, Aylesbury and Chiltern Young Archaeologists Clubs (YACs), and Chiltern Rangers to undertake geophysical surveys of an area near Great Missenden where Grim's Ditch appeared to have a 'gap'.

The purpose of the geophysical surveys was to answer the key question: are the gaps along Grim's Ditch real gaps or did the monument once continue in these areas? Over a weekend in autumn 2023, 34 young people from the YACs and Chalk, Cherries and Chairs' New Shoots programme for young people, worked with eight experienced adults and a range of equipment to try to answer this question for a small section of the Ditch.

The results of the surveys undertaken were exciting. They identified a buried linear earthwork which, due to its size and depth, is thought most likely to be a continuation of Grim's Ditch. The results show that, in this instance, the 'gap' in the Ditch is not a real gap. This adds new understanding to the original length and construction of the Ditch, and is an incredibly important piece of the puzzle. In addition, the excellent partnership between the organisations involved led to a group of young people learning new skills and discovering an important heritage asset within the landscape. See more: www.chilterns.org.uk/grimsditch

Improving volunteer skills *revitalising traditional lacemaking*



During the 19th century, the rolling hills of the Chilterns were a unique industrial landscape alive with furniture-making, straw-plaiting and lacemaking. As part of our *Celebrating Crafts and Heritage Skills* project, volunteers researched these crafts and sought to inspire more people to connect with the heritage of the Central Chilterns.

To encourage engagement, we held several successful lacemaking taster days and a children's workshop, which attracted 135 people. The lacemakers from these workshops were so enthused that they formed a new group – Chilterns Bobbin Lacemakers – to raise the profile of lacemaking in the Chilterns; they are now running workshops in local schools.

Our project has raised the profile of lacemaking (our YouTube video has had over 25,000 views!), improved volunteer skills, increased understanding among young people, and left an important legacy for heritage crafts; one lacemaker commented: "I have been able to develop my knowledge of, and skills in, lacemaking ... and revive my teaching skills." As a direct result of our project, Amersham Museum have launched a Chilterns Makers' Hub to bring together crafters for professional and social activities. See more: www.chilterns.org.uk/woodlanders

Enhancing the landscape *rejuvenating hedgerows for wildlife*

Rough Around the Hedges was a partnership project led by Prestwood Nature, supported by The Chiltern Society and Butterfly Conservation, and funded through our Rough Around the Edges project, which was delivered by the Berks, Bucks and Oxon Wildlife Trust (BBOWT).

Hedgerows are an important part of the cultural heritage of the Chilterns, long recognised for their value to the landscape. They are vital wildlife corridors, provide food and shelter for wildlife and livestock, restrict soil erosion, and act as carbon stores. However, we have lost 50% of our hedgerows nationally over the last 75 years – a trend reflected locally.

To restore and enhance Chilterns' hedgerows, Rough Around the Hedges expertly trained a core set of volunteers in hedge management, giving them the capability to support native hedge planting and native hedge improvement projects for farmers and landowners in the area. Over two winter seasons, an enthusiastic group of 26 trained volunteers worked more than 600 hours to lay 350m of new hedge and bring existing hedgerows under better management. This work exceeded all expectations; it ensured that local hedges and their wildlife thrived, established a track record of improvement at key conservation sites, and provided examples of well-managed hedges for future farmer and landowner participation.

The trained volunteers are now in a good position to spread their knowledge and enhance collaboration between Chilterns' conservation organisations. With the backing of The Chiltern Society, a long-term plan is in place to continue and expand this work in the future. See more: www.chilterns.org.uk/rougharoundtheedges



Engaging local people *celebrating the Chilterns through the arts*

Our Chilterns Festivals celebrated the landscape, culture and heritage of the Chilterns National Landscape through a range of media, including theatre, story-telling and painting, as well as through events, family activities, walks and days out.

Our Festivals focused on themes relevant to the Central Chilterns, such as its chair-making heritage, the characteristic chalk landscape, the disappearing cherry orchards, and the women working in local industries of times gone by. Alongside our seasonal events, we ran Chilterns Stories – a Festival of tales inspired by the diverse cultural and natural heritage of the Chilterns. These stories provide new ways for people living and working in the area to appreciate the value of the landscape all around them.

Six original books were created as part of Chilterns Stories:

- *The Ballad of Bodgers Wood* – an adventurous poem written by Rachel Rooney, who explores the magic of the Chilterns' woods from a child's perspective.
- *My Home in the Chilterns* – a collection of the winning entries from our children's writing competition, which delved into their views on where they live.
- *Hidden Hands* – the culmination of extensive research by our Woodlanders' Lives volunteers into the lives of women and children who worked in local craft industries.
- *Sour Cherry Soup* – an original play which toured in 2023. Written by Sara Clifford, it is a one-person show inspired by the stories of the Chilterns' cherry orchards.
- *In Their Own Words* – a collection of memories of bygone generations, bringing to life the histories of those who worked in Chilterns' industries, such as chair-making.
- *The Story of Grim's Ditch* – an exploration of the myths, legends and theories surrounding Grim's Ditch through the lens of archaeology.

All the books were sent to schools and libraries in the local area with the aim of inspiring those reading them to learn about, appreciate and value the Chilterns landscape. A short film was also created to tell people more about the collection. Feedback from schools on receiving the books has been incredibly positive and we hope that the collection will leave a lasting imprint on the literature of the Chilterns. See more: www.chilterns.org.uk/chilternsstories



“““

local teacher

Thank you for the lovely books. I am looking forward to sharing them with staff to support learning, and placing them on display in the library for children to enjoy.

What we achieved and learnt

The Scheme had many successes, but also faced some challenges – sharing these together has made the Partnership both stronger and wiser



Our key achievements

The Chalk, Cherries and Chairs Landscape Partnership ran a series of projects, the sum of which proved far greater than the parts. Although some projects needed solutions to challenges not originally perceived, we are extremely proud of what we have achieved and the Scheme has provided many examples of good practice in conservation, engagement and research. Here are some examples of how we have reached our aims:

Restore and enhance wildlife habitats, landscape features and cultural heritage

- ✓ Developed the first digital archive of local heritage assets for Bucks Archives, including a huge amount of census data.
- ✓ Set up an award-winning, landscape-scale, wildlife monitoring programme to establish a baseline of data, track long-term trends and assess the impact of farmers' work.
- ✓ Designed and delivered a package of support for landowners that has led to landscape-scale conservation, and has been used as beacon of good practice, empowering landowners and partners.
- ✓ Collected baseline survey data on chalk stream headwaters and established a partnership with the River Thames Conservation Trust.
- ✓ Raised the profile of heritage in the area, and now working with Chilterns Heritage and Archaeology Partnership (CHAP) to take this legacy forward.
- ✓ Worked with farmers and landowners to create more, bigger and better connected habitats, through a network of hedges, field margins, restored grasslands, owl boxes and more.

Create new opportunities for people to celebrate local nature and heritage, inspiring them to look after it

- ✓ Provided two 12-month traineeships with Chiltern Rangers to kick-off careers in conservation.
- ✓ Worked with diverse audiences such as religious groups, neurodivergent people, and young people from a range of backgrounds.
- ✓ Brought the landscape alive through interpretation panels, guided walks and festivals, giving people opportunities to explore and learn.
- ✓ Given people new ways of accessing heritage and nature, through art exhibitions, books, plays, music and videos. These assets are available digitally or at schools and libraries.
- ✓ Increased access to Grim's Ditch via a new virtual tour, and to routeways through new trails.
- ✓ Enabled people to celebrate local nature and heritage through events and festivals, allowing them to have fun, enjoy the landscape, and increase the richness of their lives.

Strengthen the capacity of communities to take action for their landscape

- ✓ Provided training to a wealth of community groups, enabling them to develop, learn, thrive and take action.
- ✓ Inspired people to become stewards for their local heritage and landscape.
- ✓ Provided economic benefits to organisations and partners, increasing staff capacity and project delivery, and assisting with long-term sustainability.
- ✓ Trained and equipped hundreds of volunteers in a range of subjects, such as oral histories and surveying and practical conservation, opening up new opportunities for people to try new things and make connections.
- ✓ Provided opportunities for learning and research in a variety of subjects – in person, through events, or through resources like books.
- ✓ Helped more than 50 young people learn conservation skills and get a taste for caring for their landscape.

What we learned along the way

Chalk, Cherries and Chairs faced several challenges as it navigated a global pandemic, a changing world and changes within the Partnership.

To discuss these challenges, we held a successful lessons learnt workshop, which demonstrated a high level of engagement among our stakeholders, and enthusiasm for both the Scheme's legacy and the future of the Partnership and its projects beyond Chalk, Cherries and Chairs. Here are the lessons we'd pass on to future projects:

- Invest time and effort in the Partnership and Steering Group throughout the Scheme.
- Spend time making strong connections between projects, and plan a scheme of work which is achievable within the resources available.
- Be open to involving new partners during the Scheme, especially if others take a step back.
- Ensure that partners understand what is expected from them in terms of time, funding and commitment.
- Ensure partners and hosts are ready and can invest time into getting systems, processes and project management in place at the start of the Scheme and during its lifetime.
- Make the best recruitment decisions possible and invest in team members, team-building, induction and mentoring throughout the Scheme.
- Create efficient reporting and financial claiming processes and provide training.
- Involve finance and communications teams of partner organisations from the start.
- Create a strong, Scheme-wide brand at the start, with key messages, a communications plan and guidelines in place.
- Have a clear focus on Equality, Diversity and Inclusion throughout the Scheme, including a plan, clear identification of target audiences, and co-creation.
- Create a consistent volunteer recruitment, management and recognition process across the Scheme.



*Dr Elaine King,
Chief Executive,
Chilterns
National
Landscape*

Chalk, Cherries and Chairs was the first landscape partnership of its kind for the Chilterns, created to encourage a deeper connection between local people, visitors, and the rich heritage and natural environment that define the area. Through the Scheme's projects and partnerships, we united a diverse range of organisations, communities and passionate individuals whose paths otherwise might never have crossed. Several projects have thrived and secured funding to continue beyond the programme; however, the true legacy of Chalk, Cherries and Chairs lies in the relationships built and the shared passion for protecting this special place. The journey from concept to delivery has been long, and not without its challenges, but I am incredibly proud of the team and the many successes we've achieved together. We are very grateful to The National Lottery Heritage Fund and our other funders for their generous support in making this project possible.



Looking to the future

Chalk, Cherries and Chairs has left a legacy that both the Partnership and local people can move forward by taking action for the future of our landscape



Taking the Partnership forward



Anna Foster,
CCC Project Manager

Despite facing a range of challenges, the Scheme has been successful and had a positive impact on the landscape due to the enthusiasm, commitment, passion, knowledge and drive of those involved.



Legacy was written into Chalk, Cherries and Chairs (CCC) from the start – both for individual projects and for the Scheme as a whole – to seek ways in which those in the Central Chilterns could work together more collaboratively, use resources more effectively and engage more people in improving the resilience of their landscape.

There are a great many areas where work established during the CCC Landscape Partnership Scheme will continue and be built upon. A few are highlighted here:

- Funding has been secured for the Chilterns National Landscape and Chiltern Rangers to continue work on our New Shoots conservation programme for young people.
- The Chilterns National Landscape is furthering CCC's work on farmer clusters and nature recovery, with some new funding secured.
- BBOWT has used its work with CCC to pave the way for a Community Network Officer who will continue to build connections between local nature groups.
- Our wildlife monitoring programme, Tracking the Impact, has expanded into the River Chess Smarter Water Catchment area and secured funding for its continuation, with a view to achieve long-term monitoring in the Chilterns.
- The Chilterns Heritage and Archaeology Partnership (CHAP) is well-placed to host and share the outputs of our Woodlanders' Lives and Landscapes, Routes to the Past, and Mysteries of Grim's Ditch projects, building them into its work and ensuring they will continue to be a reference for years to come, as well as supporting new groups such as Wycombe Museum's Chair Network, the Chiltern Makers' Hub at Amersham Museum.
- Our virtual tour of Grim's Ditch is the first of its kind to be created by the Chilterns National Landscape and will be used as an example for future accessibility guides.
- Our online Neighbourhood Planning Toolkit, now hosted and promoted by the Chilterns National Landscape, will continue to help communities to take action to conserve and enhance their local area through local planning processes.
- Wycombe Museum are now better equipped to deliver prehistory sessions for schools, which they will continue to do so as a result of Chalk, Cherries and Chairs.

A particular success of CCC was the partnerships between heritage and nature organisations and projects, which has led to newly formed, strong connections. To develop the Scheme's significant legacy, partners are keen to use the momentum generated by CCC to go a step further. By building on some insightful pieces of research conducted within the latter stages of CCC, we will use and share the findings to enable others to improve conservation and heritage opportunities for young people and volunteers.

There is a clear desire for the Partnership to continue and, as such, the partners are exploring options for working together into the future.

You can take our legacy on *for wildlife, for heritage, for people*

We'd like to take this chance to say **THANK YOU** for being part of the Chalk, Cherries and Chairs Landscape Partnership Scheme – whether you've helped to research heritage industries from the past or improved a community orchard, we've worked with you on your land or you've been part of our Steering Group, you've managed our finances or read our newsletter, we truly appreciate you contributing to your local landscape, and for helping us to leave a lasting legacy for local communities and nature.

BUT, we don't want you to stop doing what you're doing! Chalk, Cherries and Chairs may officially finish in November 2024, but we want our legacy and your input to continue far into the future. You may be a partner looking to take on aspects of our projects, a community group now up-and-running and able to work independently, or you may just be interested in learning more about the nature around you and conserving your landscape. Whatever your motivation, wildlife and heritage need you! Here are a few ideas of how to get involved ...



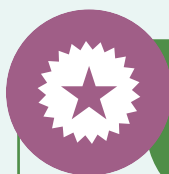
volunteer with one of our partners

- Plants, birds and butterfly ID and surveying with Tracking the Impact.
- Various conservation opportunities with BBOWT, the Chilterns National Landscape, The National Trust, Chiltern Rangers, or The Chiltern Society.
- General volunteering or being a trustee of Wycombe or Amersham Museums.
- Find a community group working for wildlife and heritage near you.



learn more about your landscape

- Explore one of our guided walks and trails, or our virtual tour of the Buckinghamshire section of Grim's Ditch.
- Hear the sounds of the Chilterns on our Sonic Map and in a choir performance of 'Beacon'.
- Watch species ID training videos.
- Read one of our 6 original Chilterns Stories books.
- Watch our videos about heritage crafts or read our blogs.
- Hear oral histories describing work in the traditional Chilterns industries of the 19th and 20th centuries.
- Explore census data about the lives of people who worked in the past industries of the Central Chilterns.
- Watch our film: 'A Journey Through the Central Chilterns'.
- Visit Wycombe Museum's new chair galleries.
- Watch 'Sour Cherry Soup', our original theatre piece.
- Learn a new practical skill such as scything or coppicing.



champion nature on your patch

- Find out about our Farmer Cluster in our case study or get involved practically on your local farm.
- Support farmers by shopping local and attending farm events (such as Open Farm Sunday).
- Use our Chilterns Neighbourhood Planning Toolkit to conserve and enhance Chilterns' special qualities.
- Take action for wildlife with BBOWT's 'how to' guides, increasing biodiversity in your area.



support for people and projects

- Join the Chiltern Makers' Hub at Amersham Museum, for professional makers.
- Interested in chairs and High Wycombe's furniture trade? Join Wycombe Museum's Chair Network.
- Access #teamwilder resources for community groups.
- Buckinghamshire Culture is your go-to organisation for anything cultural in the area.
- Visit the Chilterns National Landscape website for information about the Chilterns.



SCAN ME
for details of how to take action
or visit www.chilterns.org.uk/cc-legacy

CHILTERN LANDSCAPE PARTNERSHIP



www.chilterns.org.uk/chalkcherrieschairs

Hosted by:



**Chilterns
National
Landscape**

Primarily funded by:



**Thanks to
National Lottery players**



Supported by the
**HS2 Community &
Environment Fund**

In addition to our primary funders, more than 80 partners, groups, organisations and landowners have contributed almost £500,000 to the Scheme through match funding, whether as a general donation or a contribution to work on their land or sites. Income from sales of books and event tickets also contributes to this total. Thank you to all funders for making Chalk, Cherries and Chairs possible.

Key delivery partners:



**Berkshire
Buckinghamshire
& Oxfordshire
Wildlife Trust**



**BUCKINGHAMSHIRE
NEW UNIVERSITY**
EST. 1891



**National
Trust**



In addition to the core Partnership, Chalk, Cherries and Chairs has been supported and made possible by a huge team of more than 100 organisations made up of consultants, contractors and advisors, volunteer groups, charities and NGOs, and landowners. This is in addition to a huge volunteering effort, worth the equivalent of £600,000 to the Scheme. Our huge thanks to everyone involved, as well as to our project team.

“““

Andrew Stubbings,
CCC Farmer Cluster
member

The National Lottery Heritage Fund's investment in the Chalk, Cherries and Chairs Landscape Partnership over the last five years has enabled me and 17 other farmers to collaborate on thousands of hectares of farmland. Together, we revived wildlife habitats, created wildlife corridors, employed sustainable farming techniques, and educated the next generation of farmers on the importance of conservation.