



Unlocking Nature for All

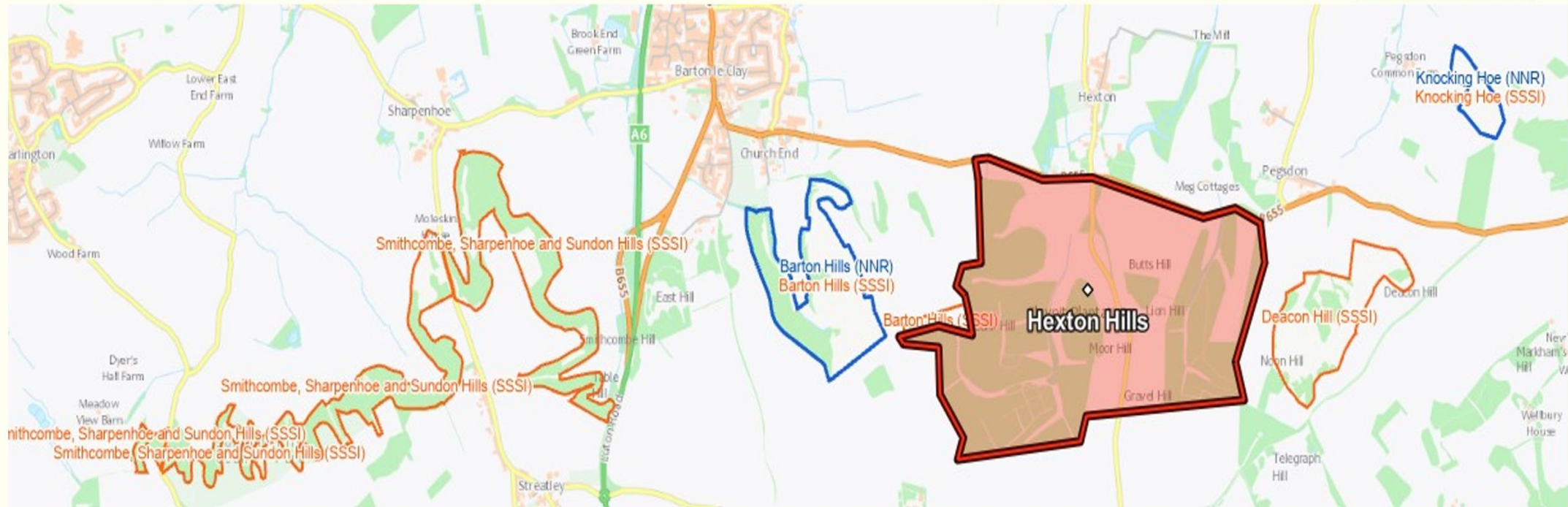
Centre for Outdoor Accessibility Training

Val Woods

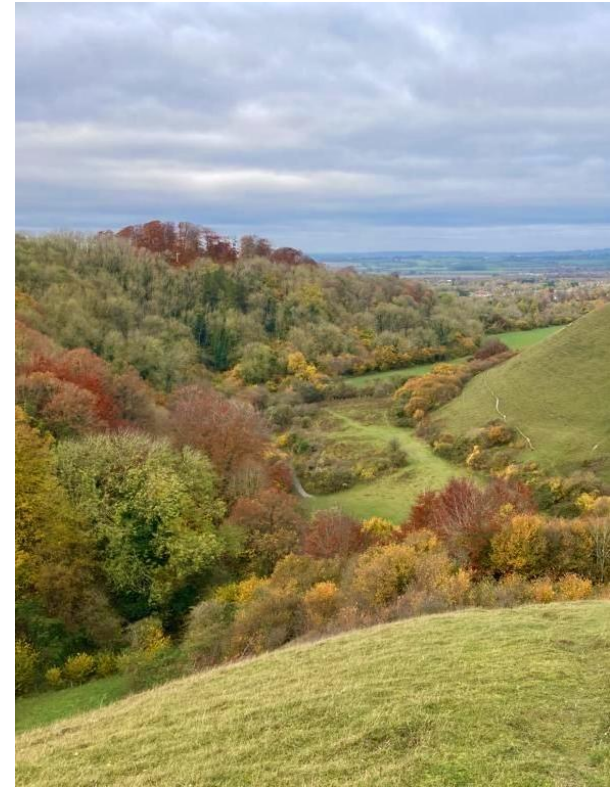
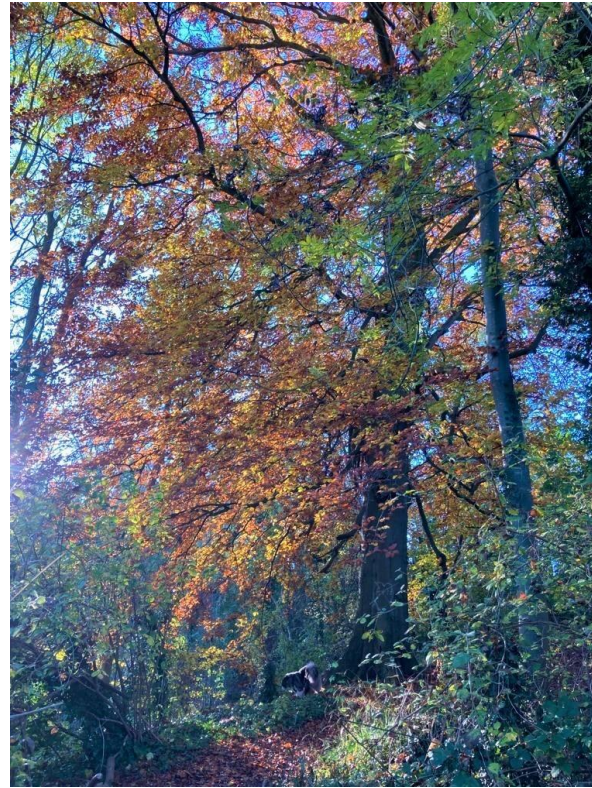
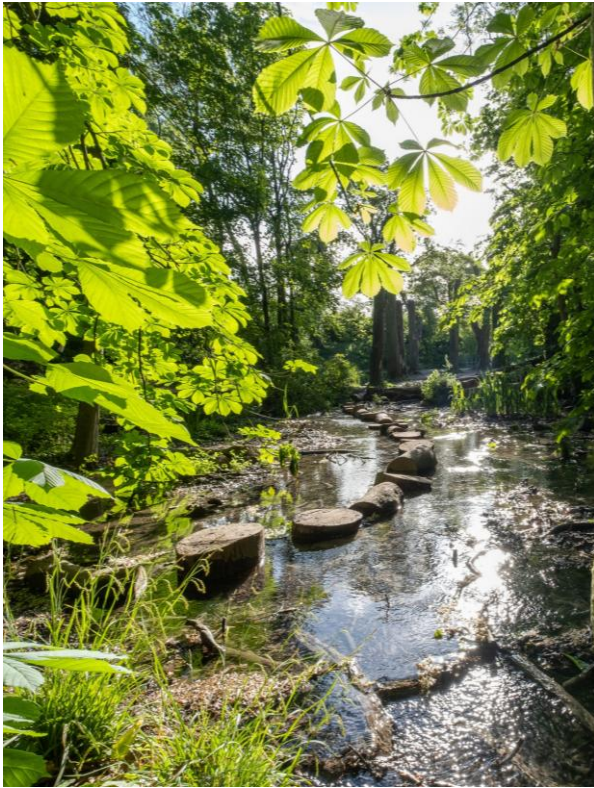
www.gov.uk/natural-england

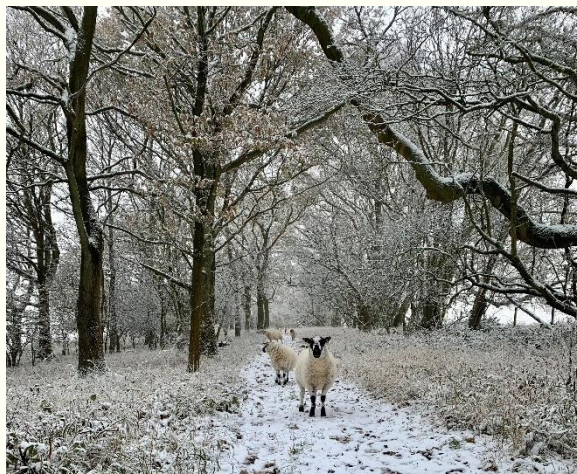
National Nature Reserves in Bedfordshire

NATURAL
ENGLAND



Barton Hills National Nature Reserve





Background

- Set up 2018
- Tom Bindoff & Chris Beney
- Aston Rowant NNR Team
- Collaboration with
 - British Horse Society,
 - Disabled Ramblers
 - Centrewire



The Centre for Outdoor Accessibility Training



COAT Vision Statement

We want to see outdoor access made accessible and inclusive for everyone. The Centre for Outdoors Accessibility Training aims to drive positive action and increasing provision of accessible green space across England through training, demonstration, and development of Best Practice.

Walk, Wheel and Ride



Off road test track for all-terrain mobility vehicles



The COAT experience



Training Modules

- Introduction to COAT
- Underpinning legislation
- Applying the Equality Act
- Understanding barriers
- Principles of access auditing
- British Standard 5709 (2018)
- Introduction to mobility aids
- Language and communication
- Field experience

Centre for
Outdoor
Accessibility
Training



Research

www.gov.uk/natural-england

Infrastructure - Latch development



Research & Collaboration





Horse Riders – learning, familiarization & research



Data about disability and the outdoors







Legislation and guidance

Public Rights of Way

Use of public rights of way

You can walk on all public rights of way.

Some public rights of way are also open to horse riders, cyclists or motorists.

-  **Footpaths** - for walking, running, mobility scooters or powered wheelchairs (Class 2 & 3)
-  **Bridleways** - for walking, horse riding, bicycles, mobility scooters or powered wheelchairs (Class 2 & 3)
-  **Restricted byways** - for any transport without a motor and mobility scooters or powered wheelchairs
-  **Byways open to all traffic** - for any kind of transport, including cars (but they're mainly used by walkers, cyclists and horse riders)

[Using mobility scooters and powered wheelchairs: Classes of mobility scooter and powered wheelchair - GOV.UK](#)

Due Regard

Having due regard to the need to advance equality of opportunity involves considering the need to:

- Remove or minimise disadvantages suffered by people due to their protected characteristics
- Meet the needs of people with protected characteristics; and
- Encourage people with protected characteristics to participate in public life or in other activities where their participation is low



What protected characteristics need consideration in the outdoors?

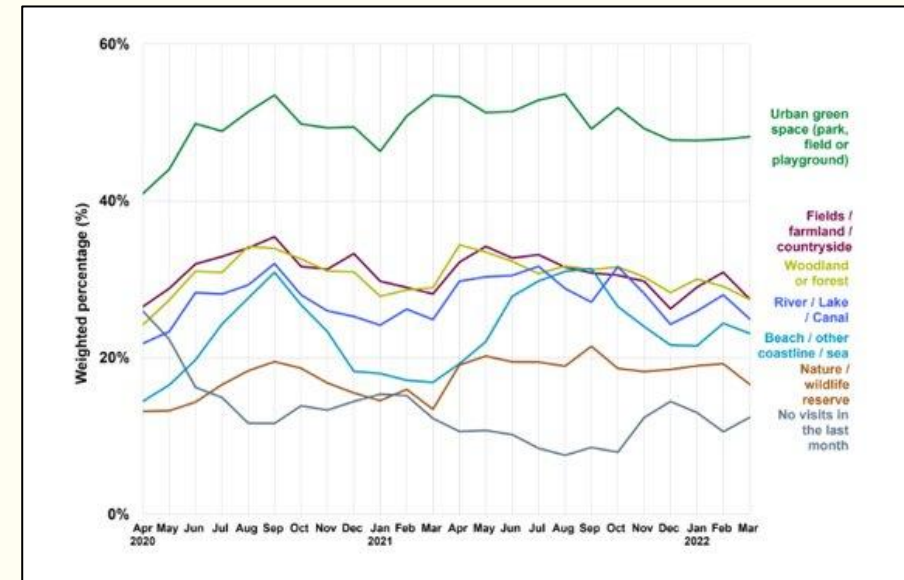
- Age
- Disability
- Gender reassignment
- Pregnancy and maternity
- Race
- Religion or belief
- Sex
- Sexual orientation
- Marriage and civil partnership



Insights - People and Nature Survey 2022/23

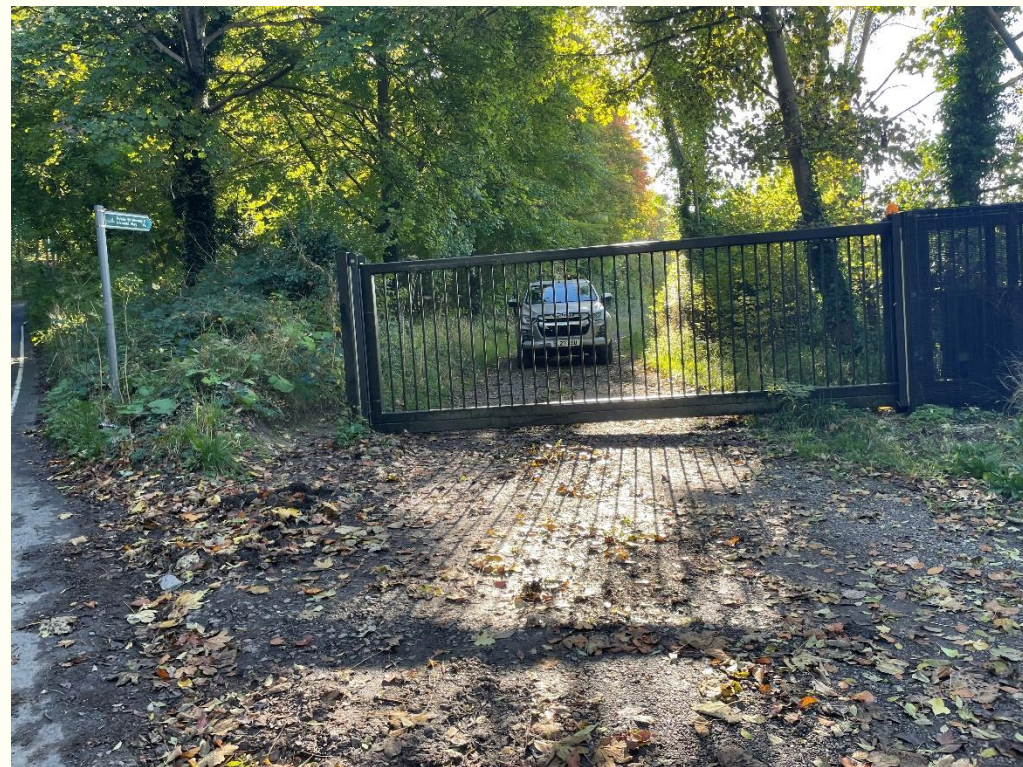


- People with a disability or health condition are typically less likely to visit outdoor spaces.
- Black or Black British adults are typically less likely to visit outdoor spaces.
- Across all ethnicities, men made more visits to green & natural space than women, and younger adults made more visits than older adults
- Adults who had visited a green & natural space in the previous 14 days agreed that spending time outdoors was good for their physical health (92%) & mental health (91%)
- For both those with disabilities or health conditions and those without, urban green spaces were the most popular type of green and natural space to visit.



Applying the Equality Act....









BS5709:2018 Gaps Gates and Stiles

What makes a gate accessible?

Space Room to manoeuvre and a well-drained surface

Hands Can I reach and use the handle or catch safely, and can I open the gate without needing a lot of strength.

Body Can I get my body, mobility scooter, pushchair, bicycle horse etc through the gate without getting caught on anything

Close Can I get through the gate without it hitting me and does it close automatically after I've gone through



British Standard BS5709:2018 Gaps Gates and Stiles

Understanding the British Standard for Gaps Gates and Stiles

BS5709:2018 explained

The Standard covers gaps, pedestrian gates, bridle gates, kissing gates, dog gates, horse stiles of two kinds, kent carriage gaps, and step over and flat top pedestrian stiles.

These explanatory pages cover ten 'rules' applicable to all compliant structures. Examples are then given of a gap, a bridle/pedestrian gate, three kissing gates and a stile with dog gate. Rules specific to each structure type are referenced beside them. The Standard also covers horse step through gates, horse stile and the kent carriage gap.

**The full Standard
BS5709:2018**
(ISBN 978 0 580 98210 1)
is available from some libraries &
bookshops and BSi British Standards
at 389 Chiswick High Road
London W4 4AL
www.bsi-global.com

'BS5709:2018 Explained' version Sept 2024 a

Produced to assist anyone involved with gaps gates or stiles: highways officer, path order maker, landowner, contractor, gate and stile manufacturer, path user and user group.
by

The Pittcroft Trust (registered charity) and Tom Bindoff
<https://www.pittcroft.org>

© 2024 but may be freely reproduced if done in full

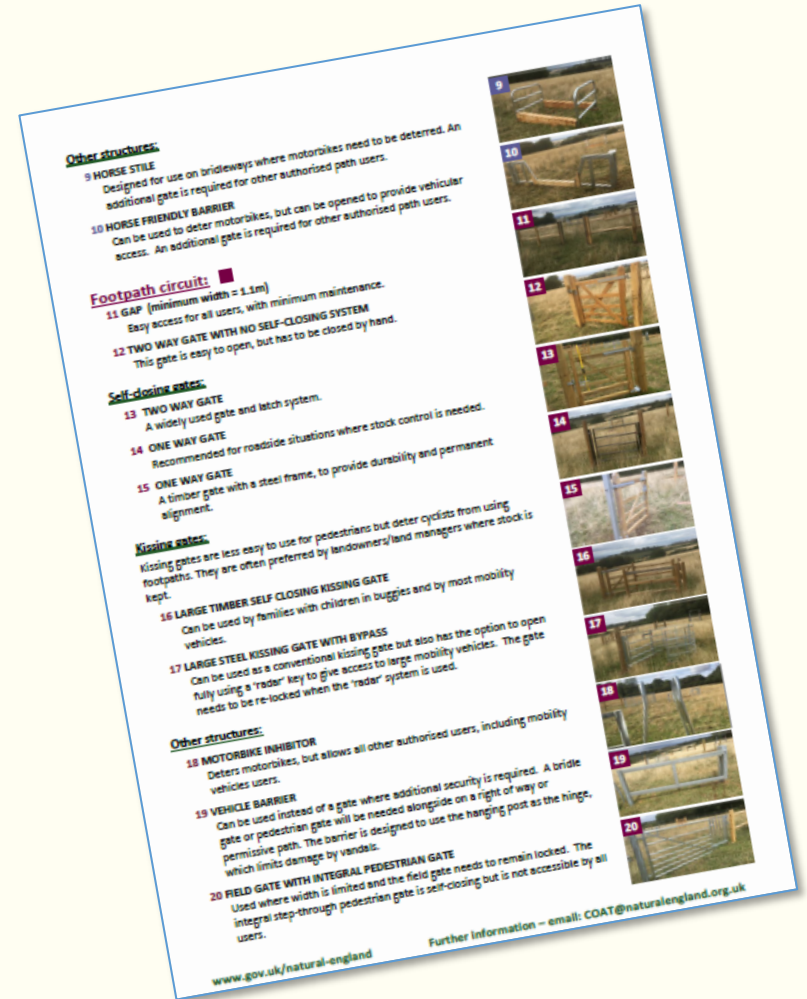
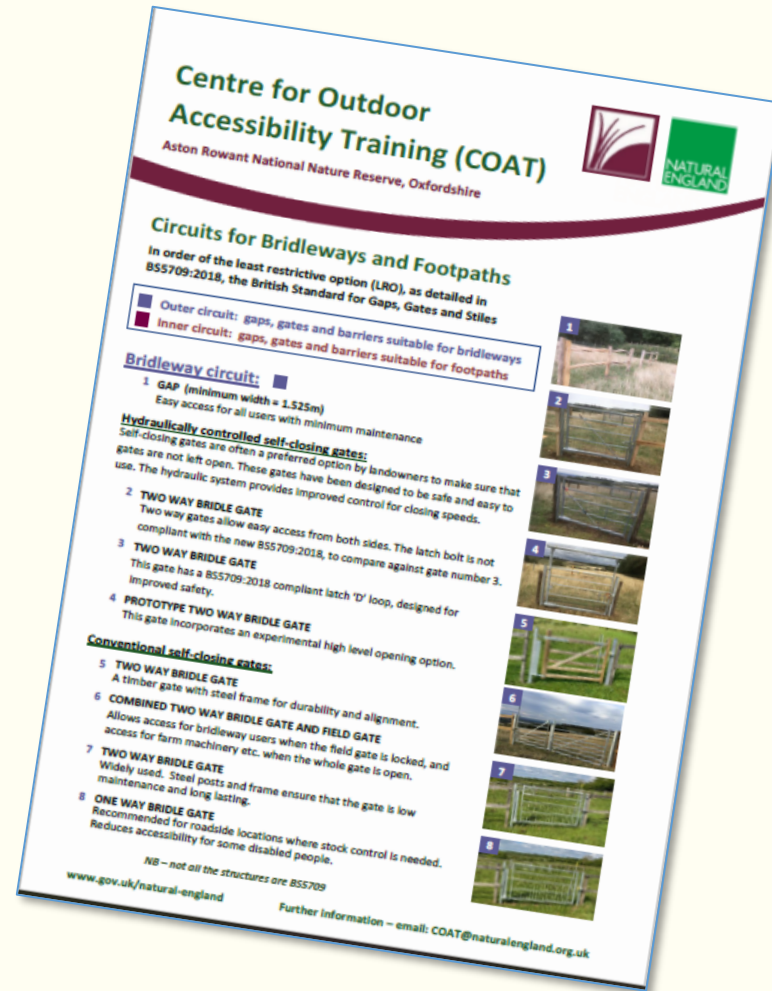
Gates & Gaps

- Least restrictive option - gaps are best!
- Select the most appropriate structure for location & function
- Latches & handles
- Width or turning space
- Surfaces
- Surrounding manoeuvring area
- Closing time of bridle gates



Gates & Gaps

Self-led routes for Bridleways and Footpaths



By All Reasonable Means
Least restrictive access to the outdoors



A guide produced by Sensory Trust on behalf of Natural England, and in collaboration with Natural Resources Wales.

Outdoor Accessibility Guidance

Supporting inclusive outdoor access in the UK



paths
for all



Sensory Trust



Understanding the British Standard for Gaps Gates and Stiles

BS5709:2018 explained

The Standard covers gaps, pedestrian gates, bridle gates, kissing gates, dog gates, horse stiles of two kinds, kent carriage gaps, and step over and flat top pedestrian stiles.

These explanatory pages cover ten 'rules' applicable to all compliant structures. Examples are then given of a gap, a bridle/pedestrian gate, three kissing gates and a stile with dog gate. Rules specific to each structure type are referenced beside them. The Standard also covers horse step through gates, horse stile and the kent carriage gap.

The full Standard
BS5709:2018
(ISBN 978 0 580 98210 1)
is available from some libraries &
bookshops and BSi British Standards
at 389 Chiswick High Road
London W4 4AL
www.bsi-global.com

'BS5709:2018 Explained' version Sept 2024 a

Produced to assist anyone involved with gaps gates or stiles: highways officer, path order maker, landowner, contractor, gate and stile manufacturer, path user and user group.
by
The Pittcroft Trust (registered charity) and Tom Bindoff
<https://www.pittcroft.org>

© 2024 but may be freely reproduced if done in full

All-terrain mobility vehicles

All terrain mobility vehicles



All terrain mobility vehicles



Communications with visitors

Signage



Signage





Filming

Future Developments

Future Infrastructure Development

- New gate designs
- Boardwalks
- Bridges
- Footpath & bridleway surfaces
- Signage
- Seating
- New all purpose training facility!



Thank you

For further information contact
Val Woods:

COAT@naturalengland.org.uk

Tel:07901 309002



Useful Links



- [Outdoor Accessibility Guidance - Paths for All | Paths for All](#)
- [ByAllReasonableMeansEnglandAug2020.pdf](#)
- IFF Research. (2023). People and Nature Survey Analysis. NECR500. Natural England
<https://publications.naturalengland.org.uk/publication/6549867611291648>
- [The People and Nature Surveys for England: Adults' Data Y5Q1 \(April 2024 - June 2024\) - GOV.UK](#)

[Unlocking Nature - A Short Introduction to Gaps, Gates and Stiles](#)

[Unlocking Nature - Gaps, Gates & Stiles on Footpaths](#)

[Unlocking Nature - Gaps & Gates on Bridleways](#)