

Invitation to Tender

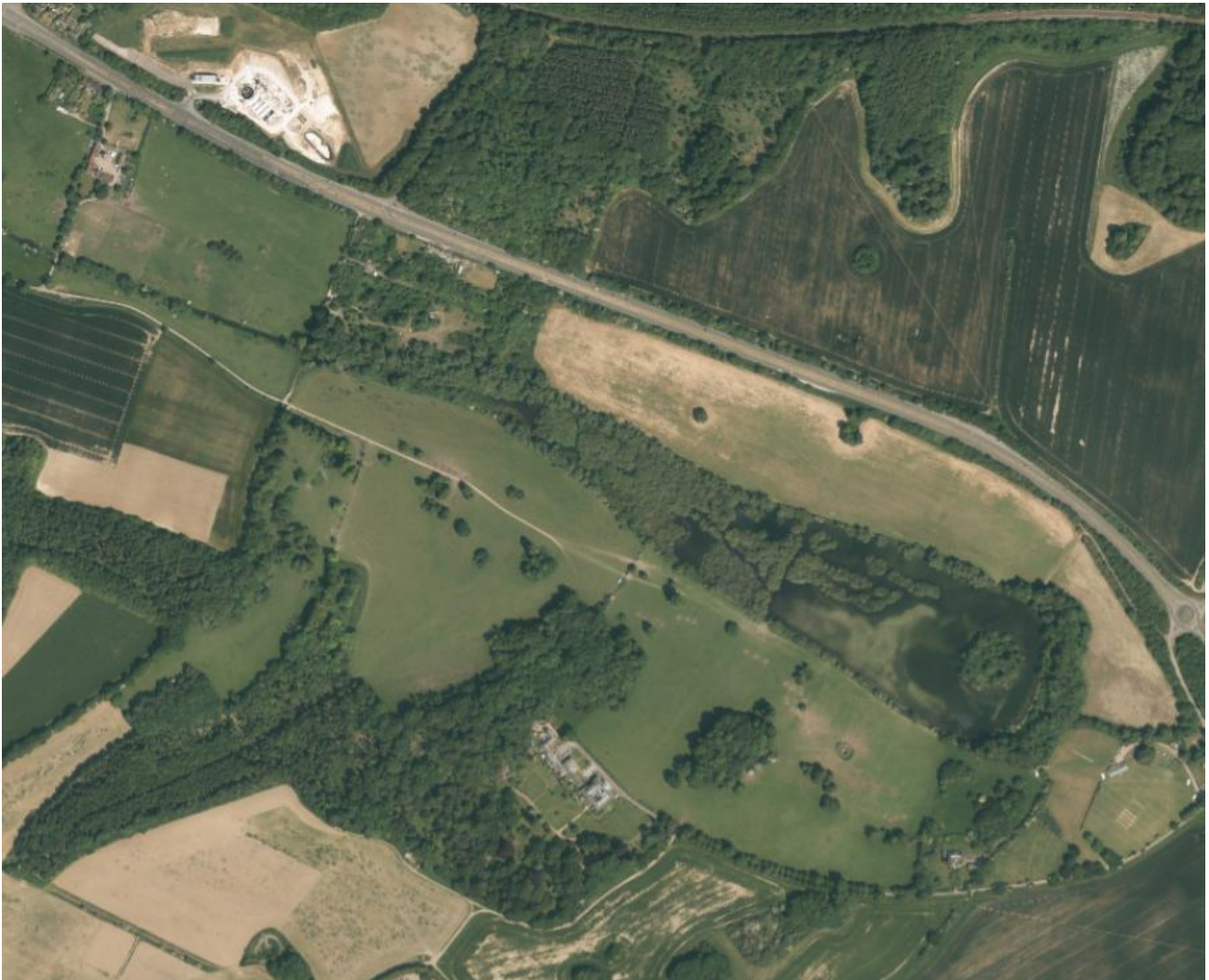
Location: Kennel Farm, Little Missenden

Works: Tree survey & parkland restoration plan

Kennel Farm

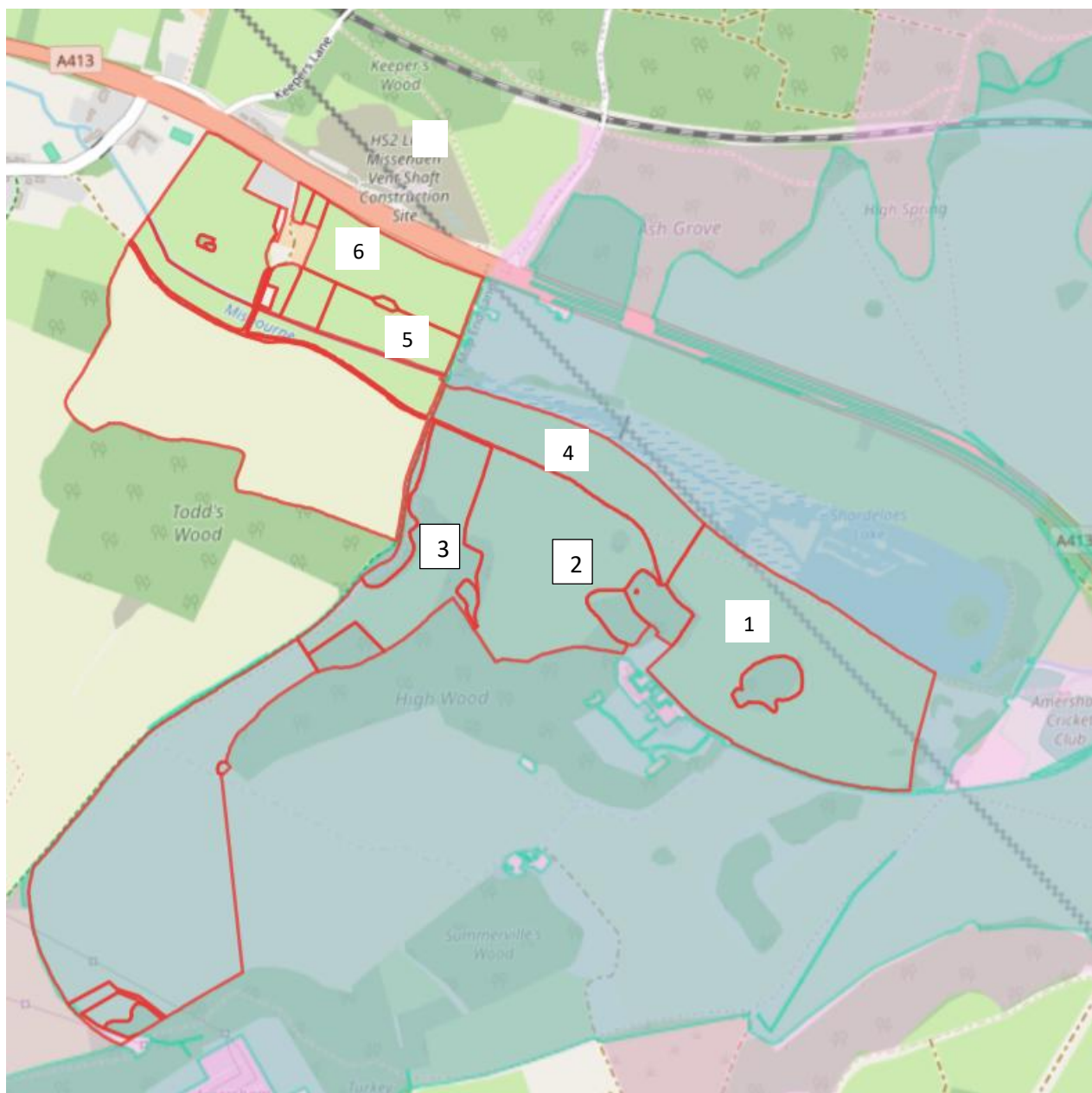
The farm is on the eastern edge of Little Missenden, Amersham, Bucks (HP7 0RJ).

The River Misbourne runs through the middle of pasture grazed by sheep and horses. The low-lying meadows are periodically flooded. The fields are dotted with mature trees and spinneys.



Kennel Farm Parkland Restoration Plan

A site plan is provided below.



- Farm boundary
- Historic parkland boundary

Schedule of works

A survey should be undertaken and a report produced which should cover the following, as a minimum.

- 1 A map of veteran trees in parcels 1-6 marked on the site plan (total area = 39.88 ha), including significant dead standing or fallen trees.

- 2 A summary of veteran features (including positive features such as potential bat roosts) and/or threats to existing trees.
- 3 A summary of the amount and quality of dead wood.
- 4 Recommendations for actions to improve the longevity of valuable, living veteran trees and/or the area around their bases.
- 5 A summary planting plan including species recommendations, planting restrictions, any licenses that might be required and a suggested implementation timetable.

The survey and report should be completed before 24th July 2026.

Evaluation process

Tenders will be evaluated on the basis of the following details:

- Demonstrated understanding of the project brief.
- Demonstrated relevant qualifications, knowledge and experience.
- Description of how the work will be carried out.
- Estimated time required to deliver the survey and report.
- Estimated costs.
- Details of your insurance.
- Details of your health and safety procedures.

References from previous clients may be requested during the assessment process.

Submission

For a site visit or questions please contact:

Harriet Bennett, Farming and Landowner Engagement Adviser (Chilterns Conservation Board).

hbennett@chilterns.org.uk

07946 629708

Tenders should be submitted by 17:00 on 29th May 2026 Harriet Bennett (details above).

References from previous clients may be requested during the assessment process.